

*'It's about our life, our health,
our care, our family and
our community'*

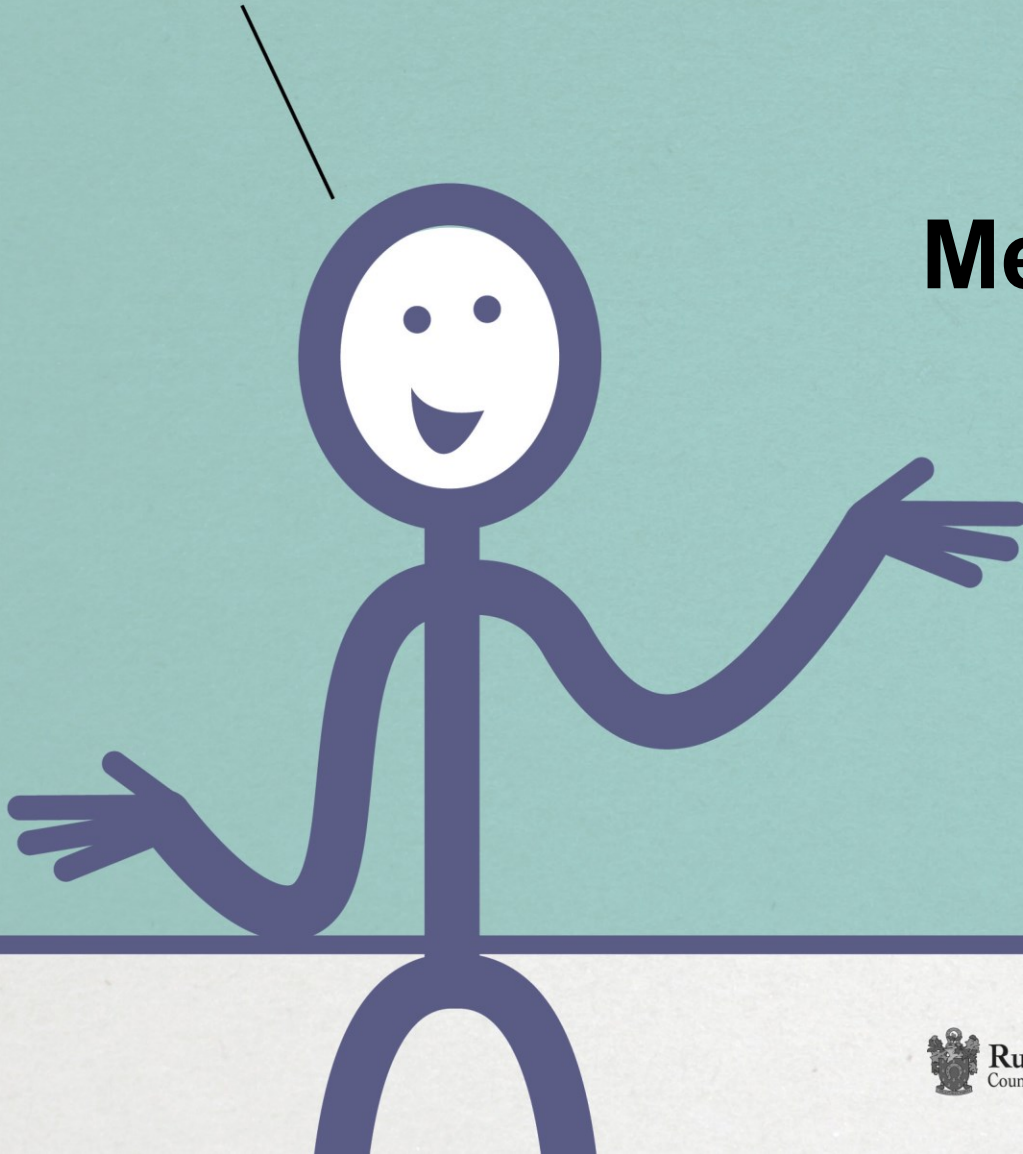


Better care together

Leicester, Leicestershire & Rutland health and social care

Mental Health

STP



healthwatch



NHS



Scope

- Adults; resilience & recovery, primary & secondary, in patient & community care
- Connects with tertiary, CAMHs & population based prevention
- Dementia not included





Better care together

Leicester, Leicestershire & Rutland health and social care

Drivers

System wide co creation & delivery of a strategy to address rising demand & sustainability through:

- 5yr Forward View & Crisis Concordat
- Urgent Care Vanguard
- Acute care pathway
- Parity of esteem





Key Targets

- Crisis response – 4 & 24hrs
- First Episode of Psychosis - 2 weeks
- IAPT – 25%
- Liaison psychiatry – Core 24
- Perinatal access
- Zero out of Area admissions
- Suicide reduction - 10%
- Parity of esteem





Strategic Direction

- Prevention and resilience – reducing demand
- Strengthened primary care
- Place-based working
- Community capacity
- End to end pathways
- Efficient and high efficacy clinical care
- Recovery focused





Achievements

- Crisis & urgent response redesign – 4hr response improved to 71%
- Crisis house
- Strengthened Liaison service -1hr target @ 80%
- First Episode in psychosis exceeding 2 week target
- 111 warm transfer to help line
- All age MH Act place of safety rebuild – June 5th
- Recovery college – 3 new sites
- CAMHs crisis service – commence 10th April





Strategic work in progress

- Strengthen clinical & stakeholder engagement through a refresh of the strategic narrative
- Rebuild the acute pathway:
 - Partner with Northumberland, Tyne & Weir
 - Profile 500 user pathways
 - Clinically led detailed redesign
 - Build on place based teams





Change in progress: prevention

- MH First aid training
- IAPT – referrals & performance
- Deflection of admissions:
 - Completion of Crisis & CMHT redesign
 - Refocus crisis house
- Crisis line & café
- First episode of psychosis





Change in progress: hospital process

- Care & discharge planning process
- Clinical challenge to reduce LoS
- Personality disorder & Autism pathway development
- AHP/117 processes





Change in process: recovery & discharge

- DToC operational & system focus
- Expansion of recovery colleges & procurement of recovery hubs
- Female PICU
- Access to accommodation & step down proposals





Better care together

Leicester, Leicestershire & Rutland health and social care

Support needed

- Integration with other STP work streams e.g. prevention, integrated teams & children
- Parity of esteem
- Access to transformation investment



healthwatch



NHS